

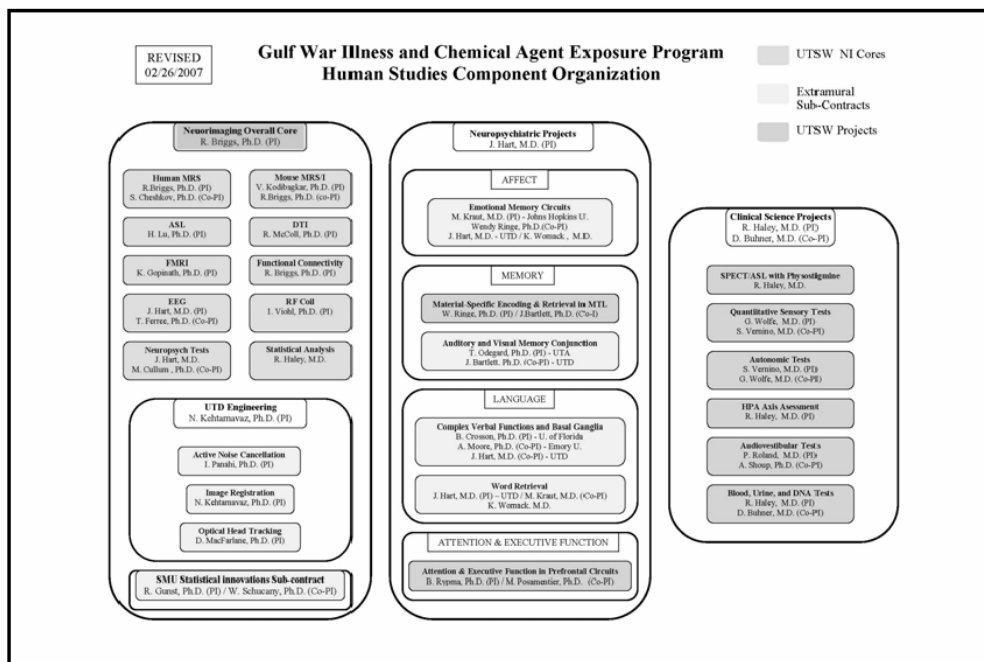
Presentation 3 – Richard Briggs

Neuroimaging Introduction and Overview

Richard W. Briggs, Ph.D.

Department of Radiology, Division of Neuroradiology
 Neuroimaging Laboratory
 Gulf War Illness and Chemical Agent Exposure Program
 University of Texas Southwestern Medical Center
 Dallas, Texas

Richard.Briggs@UTSouthwestern.edu



Neuroimaging Sub-Cores and PIs

#	Sub-Core	P.I. (Co-PI)
1	Human MRS	Richard Briggs, Ph.D. (Sergey Cheshkov, Ph.D.)
2	ASL-SPECT CBF	Hanzhang Lu, Ph.D.
3	DTI	Roderick McColl, Ph.D.
4	FMRI	Kaundinya Gopinath, Ph.D.
5	Functional Connectivity	Richard Briggs, Ph.D.
6	EEG	John Hart, M.D. (Tom Ferree, Ph.D.)
7	Neuropsych Tests	John Hart, M.D.
8	Statistics & Analysis	Robert Haley, M.D.
9	Mouse MRS *	Vikram Kodibagkar, Ph.D.

* part of the pre-clinical (animal model and molecular) component task order group

Updates on Neuroimaging Methods and Progress

- EEG (high-density, source localization)
- ¹H Spectroscopy
- Diffusion Tensor Imaging (DTI)
- Perfusion and CBF Imaging (ASL)
- Engineering Innovations (Image Registration, Active Noise Cancellation and Speech Enhancement)