

Chronic Traumatic Encephalopathy (CTE) and its connection with ALS

*Neil W. Kowall, M.D.
Chief of Neurology
VA Boston Healthcare System*

Chronic Traumatic Encephalopathy

- A rediscovered disease
- Unique neuropathology
- Molecular signature
- Pathogenic mechanism: recurrent trauma

Journal of the International Neuropsychological Society (2004), 10, 794–806.
Copyright © 2004 INS. Published by Cambridge University Press. Printed in the USA.
DOI: 10.1017/S1355677704105146

CASE STUDY

Neuropsychological results and neuropathological findings at autopsy in a case of mild traumatic brain injury

ERIN D. BIGLER

Departments of Psychology and Neuroscience, Brigham Young University, Provo, Utah, LDS Hospital, Salt Lake City, Utah and Department of Psychiatry and Radiology, University of Utah, Salt Lake City, Utah
(RECEIVED May 22, 2003; REVISED March 17, 2004; ACCEPTED March 26, 2004)

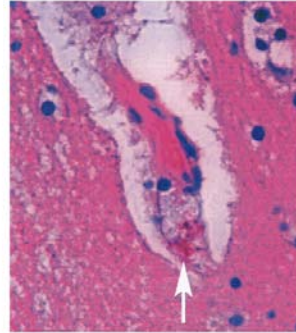


Fig. 3. Histological finding of necrosis (arrow) on a perivascular space indicating prior hemorrhage, microthrombi, and microthrombi indicated, according to the neuropathologist's conclusions.

Wild-type and mutant SOD1 share an aberrant conformation and a common pathogenic pathway in ALS

Daryl A Bosco^{1,8}, Gerardo Morfini^{2,7,8}, N Murat Karabacak³, Yuyu Song^{2,7}, Francois Gros-Louis⁴, Piera Pasinelli⁵, Holly Goolsby⁶, Benjamin A Fontaine¹, Nathan Lemay¹, Diane McKenna-Yasek¹, Matthew P Frosch⁶, Jeffrey N Agar³, Jean-Pierre Julien⁴, Scott T Brady^{2,7} & Robert H Brown Jr¹

Many mutations confer one or more toxic function(s) on copper/zinc superoxide dismutase 1 (SOD1) that impair motor neuron viability and cause familial amyotrophic lateral sclerosis (FALS). Using a conformation-specific antibody that detects misfolded SOD1 (C4F6), we found that oxidized wild-type SOD1 and mutant SOD1 share a conformational epitope that is not present in normal wild-type SOD1. In a subset of human sporadic ALS (SALS) cases, motor neurons in the lumbosacral spinal cord were markedly C4F6 immunoreactive, indicating that an aberrant wild-type SOD1 species was present. Recombinant, oxidized wild-type SOD1 and wild-type SOD1 immunopurified from SALS tissues inhibited kinesin-based fast axonal transport in a manner similar to that of FALS-linked mutant SOD1. Our findings suggest that wild-type SOD1 can be pathogenic in SALS and identify an SOD1-dependent pathogenic mechanism common to FALS and SALS.

NATURE NEUROSCIENCE ADVANCE ONLINE PUBLICATION

Received 19 July; accepted 10 September; published online 17 October 2010; doi:10.1038/nn.2660

Common Pathogenic Mechanisms

- Oxidative Injury
- Inflammation
- Protein Aggregation
- Vasculopathy
- Cell death pathways (Apoptosis)
- ?Transcriptional/translational abnormalities (miRNA)
- ?Epigenetic modifications

Conclusions

- Basic Discoveries continue to revolutionize out understanding of pathophysiology
- Much is yet to be learned by studying postmortem human brain tissue
- This is why it is essential to encourage brain autopsy and donation for research