



Veterans Employment 2000 to 2013

Prepared by the National Center for Veterans Analysis and Statistics

December 2014

Data source is Current Population Survey

- The Current Population Survey (CPS), sponsored jointly by the U.S. Census Bureau and the U.S. Bureau of Labor Statistics (BLS), is the primary source of labor force statistics for the population of the United States and District of Columbia
- Current Population Survey, a sample of 60,000 households, data are collected by personal and telephone interviews. Basic labor force data are gathered monthly; data on special topics are gathered in periodic supplemental surveys
- CPS covers the ***civilian noninstitutional population***, which includes persons age 16 and over but excludes people living in institutions (correctional institutions, residential nursing, or mental health care facilities) and Active Duty Service Members in the Armed Forces

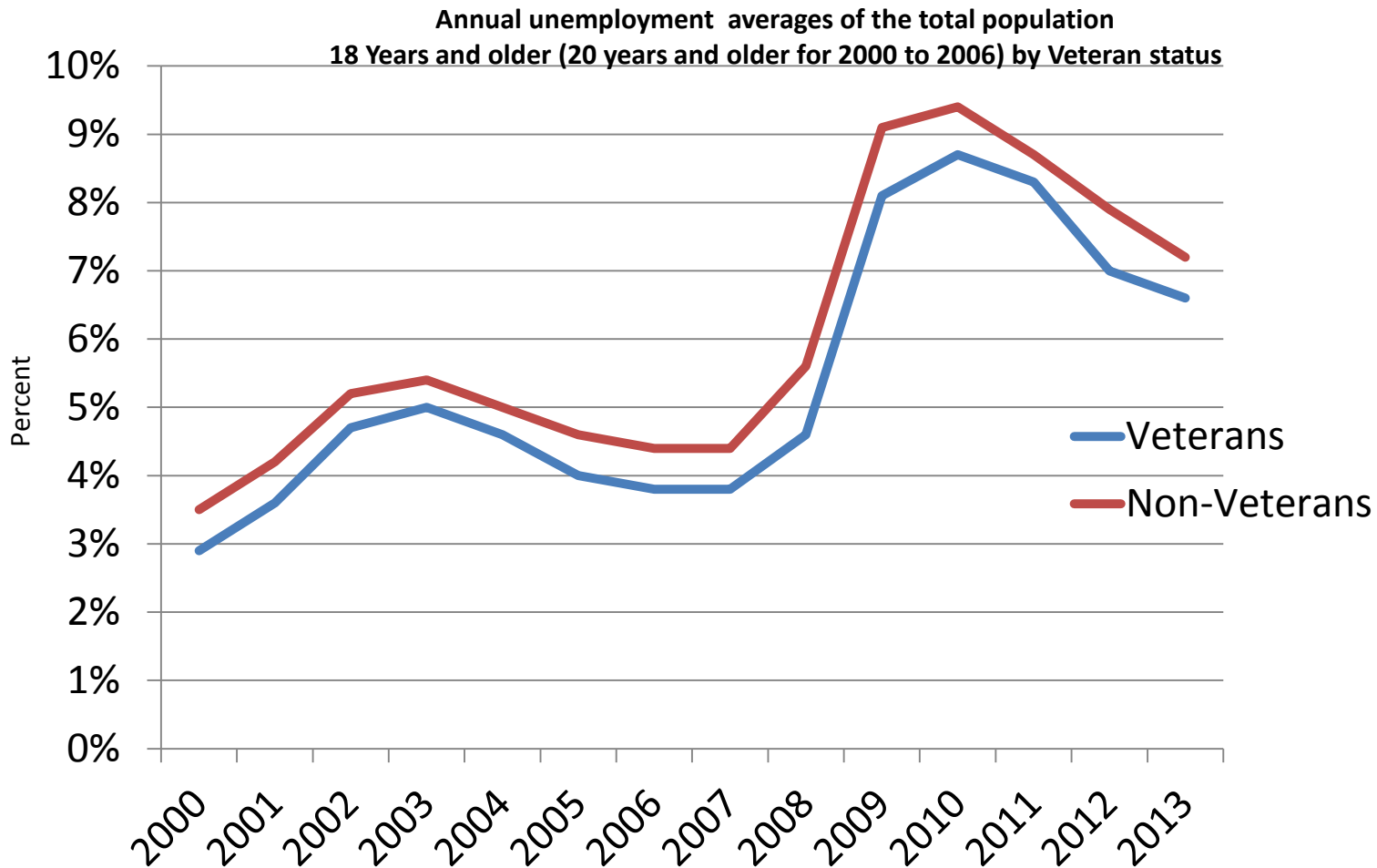
Key definitions

- **Veterans** are men and women who served on active duty in the United States Armed Forces and were civilians at the time of the survey. Members of the Reserve and National Guard are considered to be Veterans if they have been mobilized for active military service
- **Non-Veterans** are men and women who have never served on active duty in the United States military
- The **civilian labor force** is made up of the employed and the unemployed, excluding active military Service Members and others living in institutions
- Persons not in the labor force combined with those in the civilian labor force constitute the **civilian noninstitutional population**

Definition of unemployed and unemployment rate

- The Bureau of Labor Statistics defines the *unemployed* as
 - Persons who do not have a job, have actively looked for work in the prior 4 weeks, and are currently available for work
 - Workers expecting to be recalled from layoff are counted as unemployed, whether or not they have engaged in a specific job seeking activity. In all other cases, the individual must have been engaged in at least one active job search activity in the 4 weeks preceding the interview and be available for work (except for temporary illness)
- The *unemployment rate* reflects the number of unemployed as a percentage of the civilian labor force

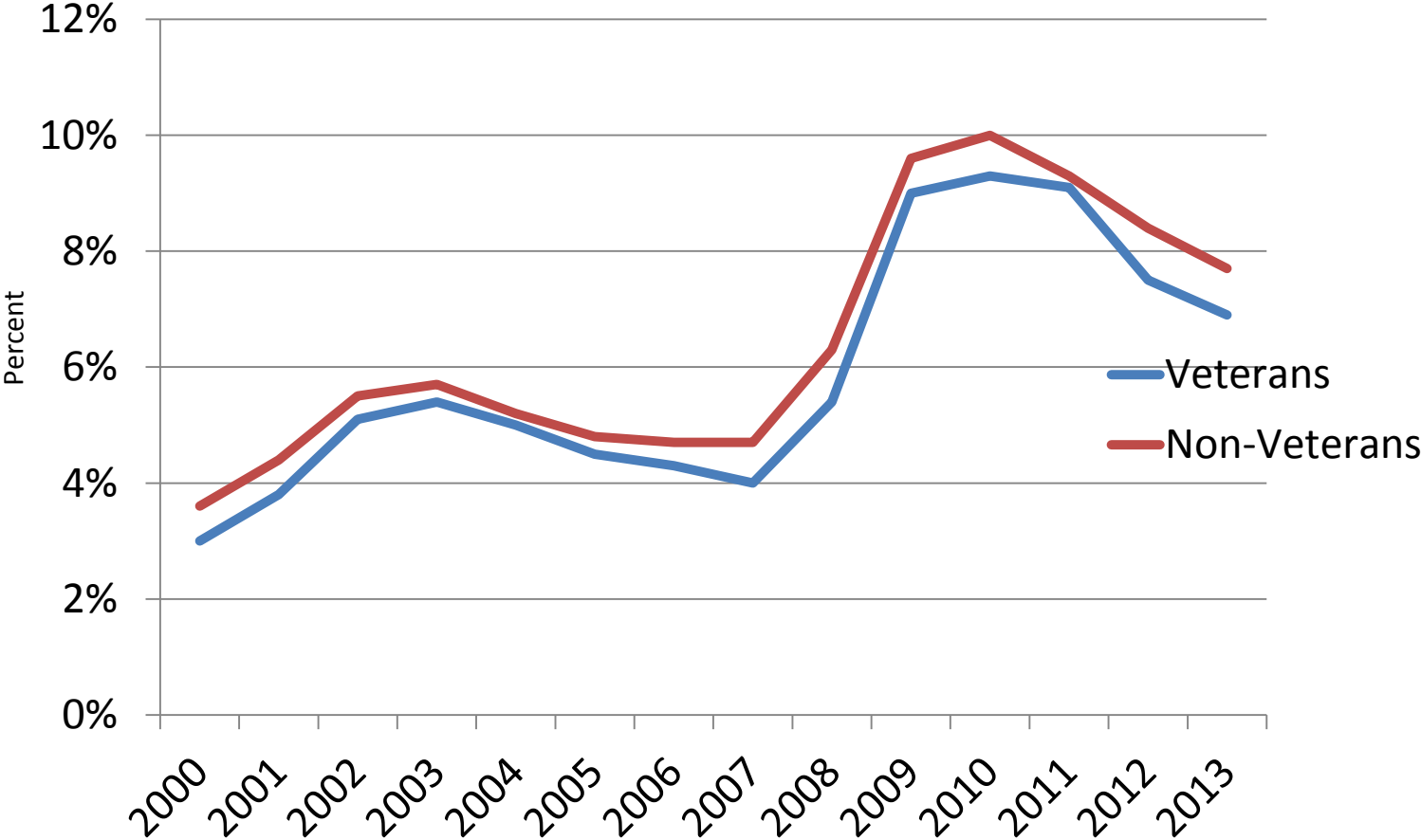
Veterans had slightly lower unemployment rates than non-Veterans between 2000 and 2013



Source: Bureau of Labor Statistics <http://www.bls.gov/webapps/legacy/cpsatab5.htm>

Veterans 18 to 54 had similar or slightly lower unemployment rates than non-Veterans

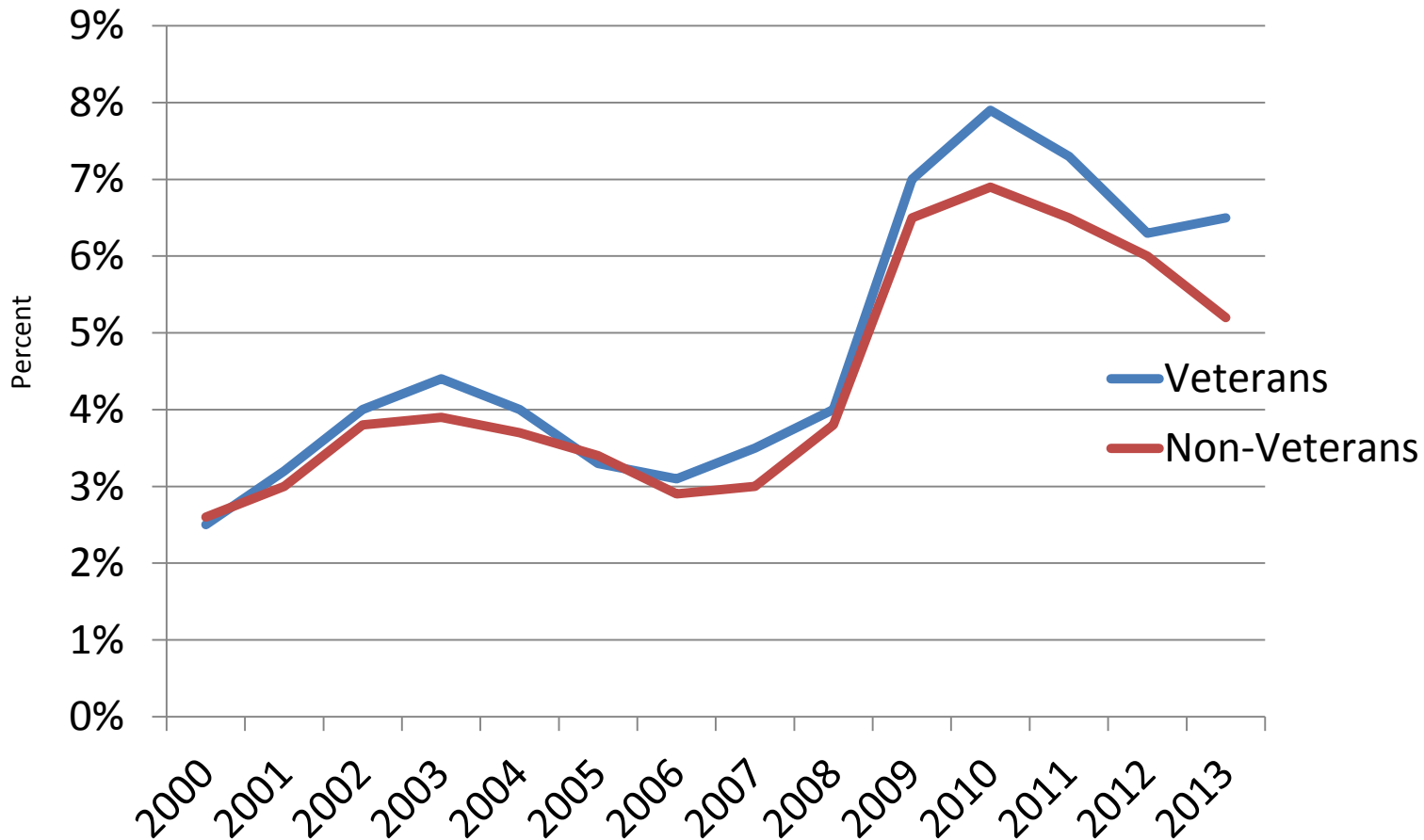
Annual unemployment averages of the population 18 to 54 years old (20 years and older for 2000 to 2006) by Veteran status



Source: Bureau of Labor Statistics <http://www.bls.gov/webapps/legacy/cpsatab5.htm>

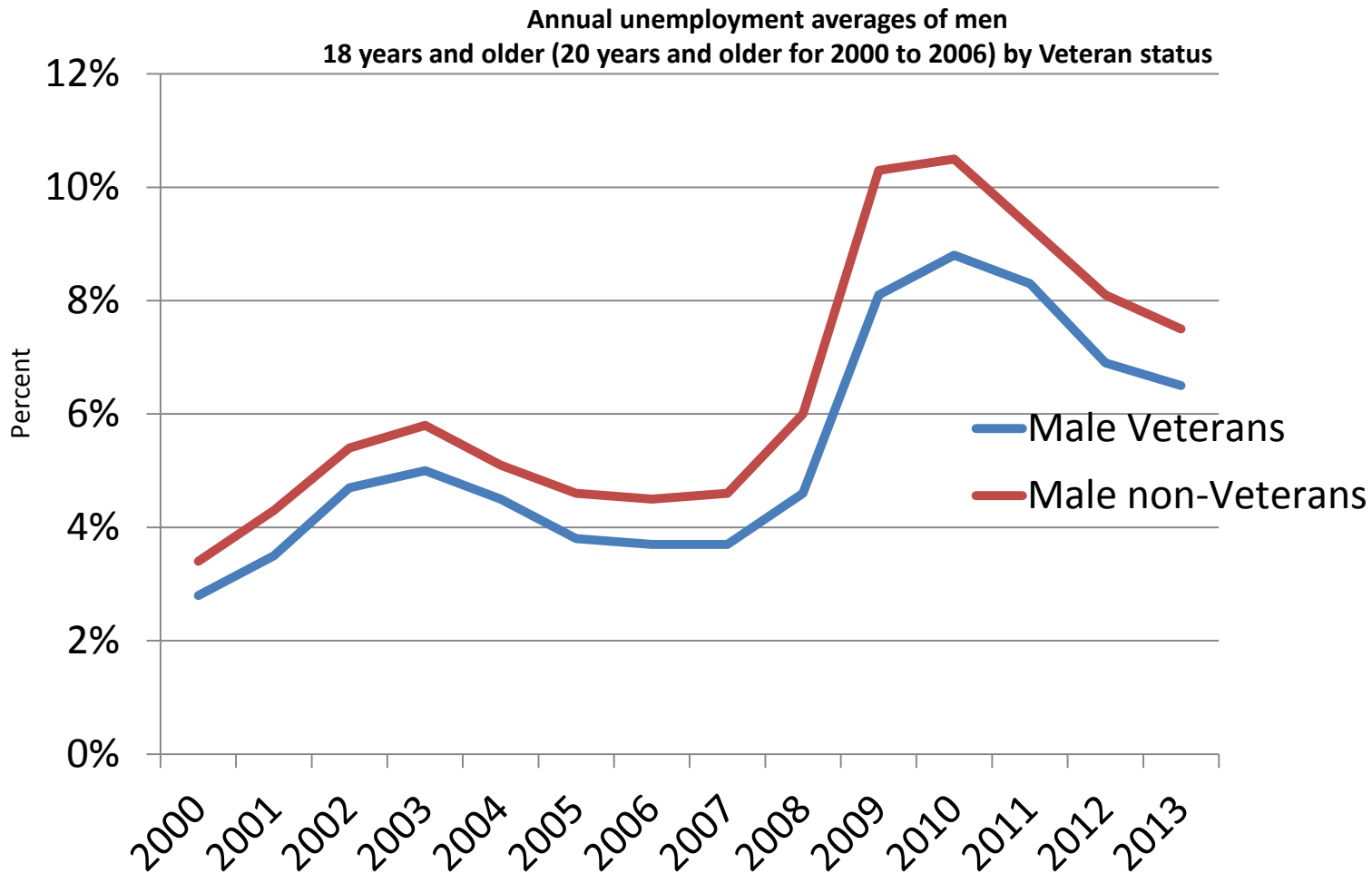
Unemployment rates for Veterans 55 and over were similar or slightly higher than those of non-Veterans

Annual unemployment averages of the population
55 years and over, by Veteran status



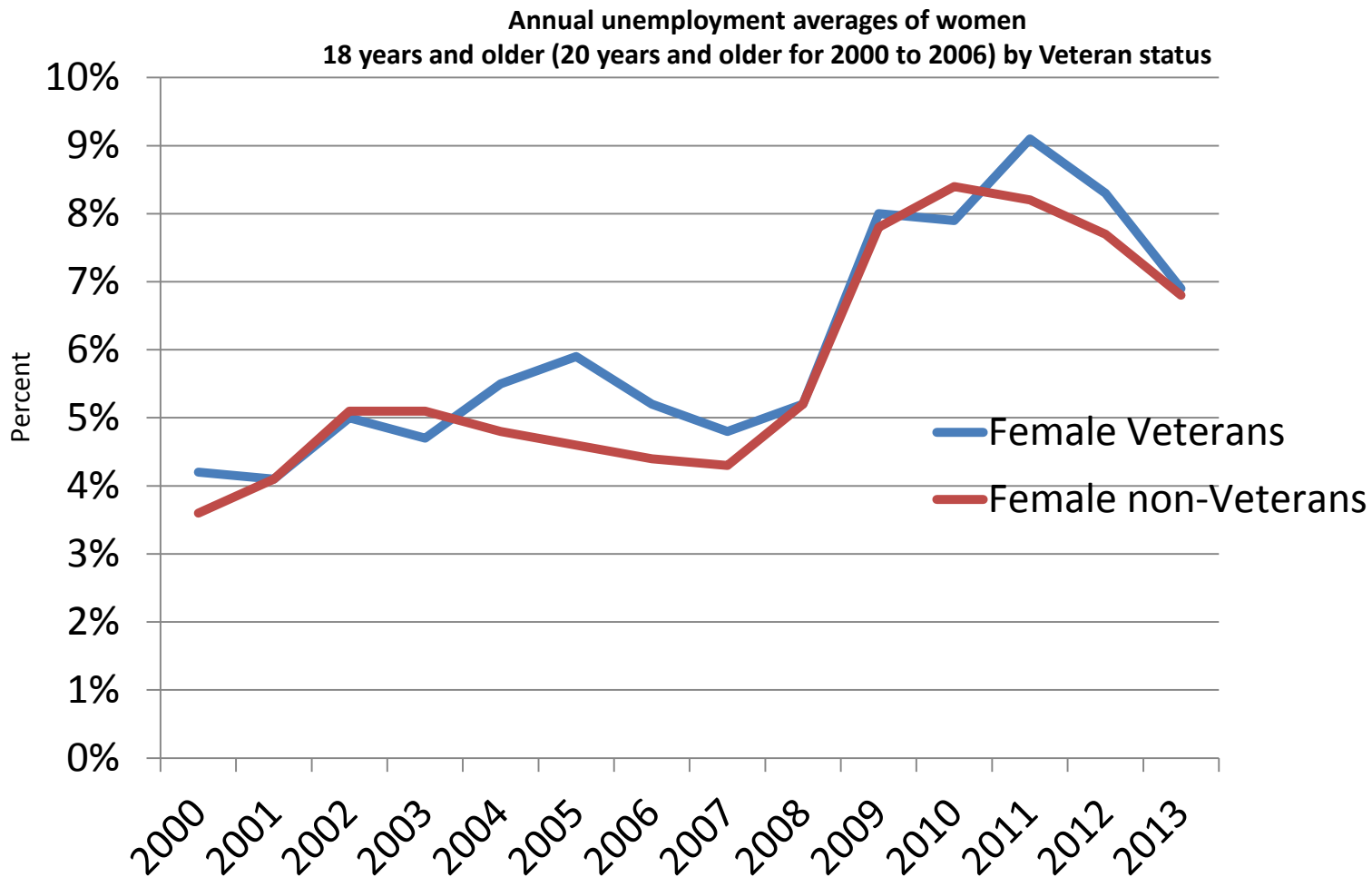
Source: Bureau of Labor Statistics <http://www.bls.gov/webapps/legacy/cpsatab5.htm>

Male Veterans had lower unemployment rates than their non-Veteran contemporaries



Source: Bureau of Labor Statistics <http://www.bls.gov/webapps/legacy/cpsatab5.htm>

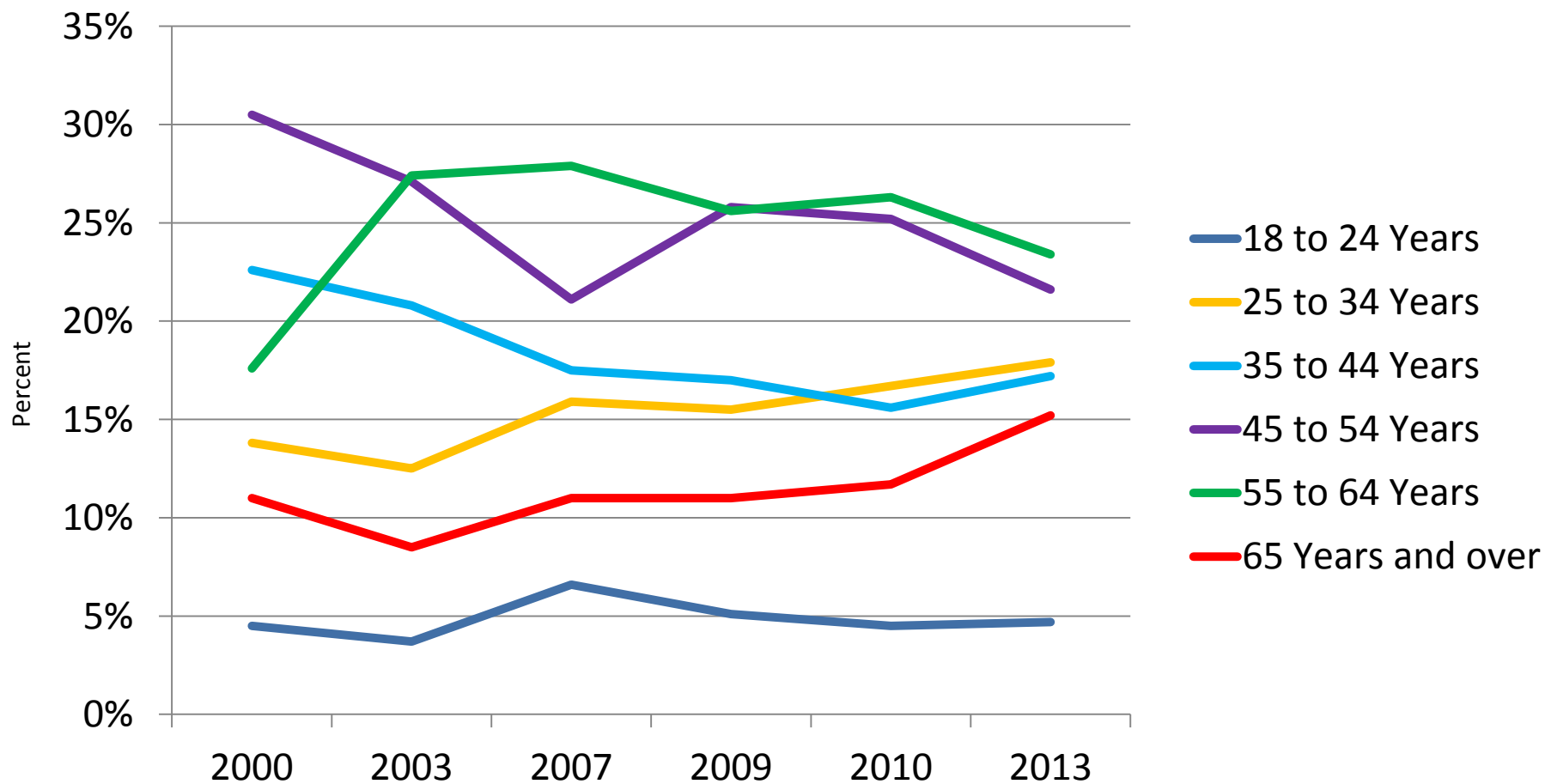
Women Veterans experienced similar unemployment rates as non-Veteran women



Source: Bureau of Labor Statistics www.bls.gov/cps

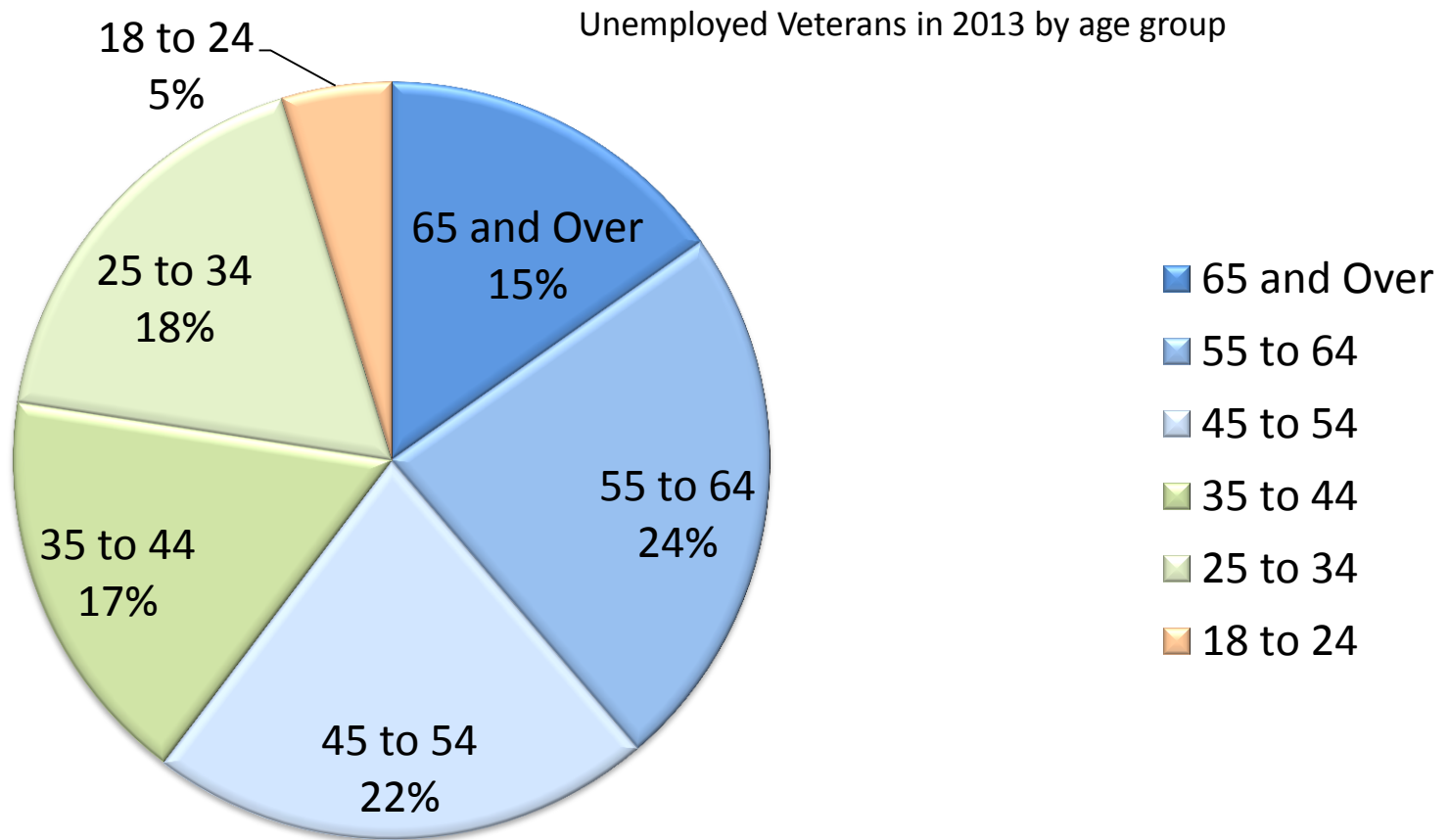
Veterans ages 25-34 as well as ages 65 and over were a growing segment of the Veteran unemployed population

Proportion of unemployed Veterans by age group, 18 years and older
(20 to 24 years from 2000 to 2003)



Totals may not add to 100% because of rounding

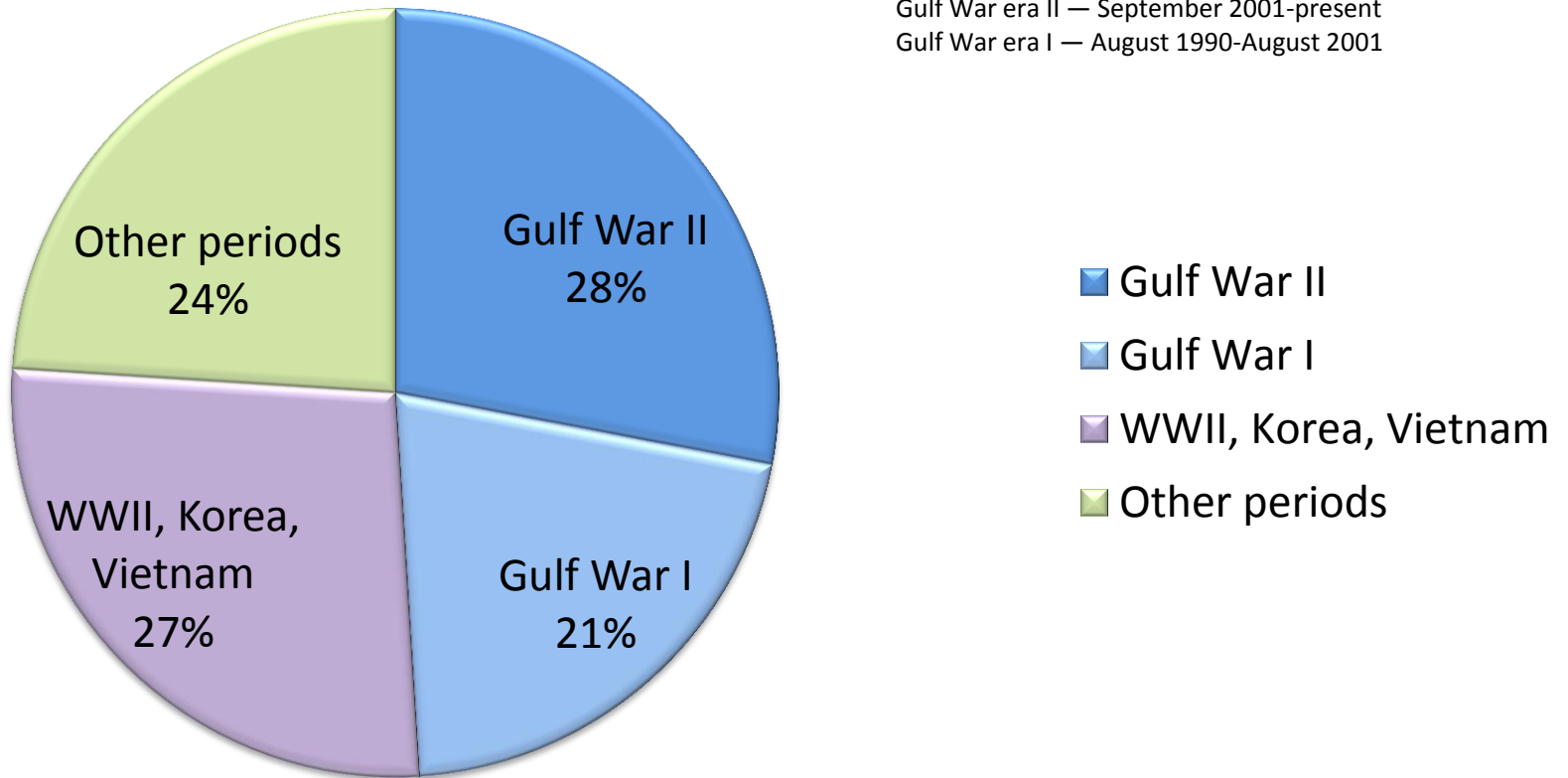
Among 722,000 unemployed Veterans in 2013 about 60% were age 45 year and over



Gulf War-era Veterans (1990-present) were about half of all unemployed Veterans in 2013

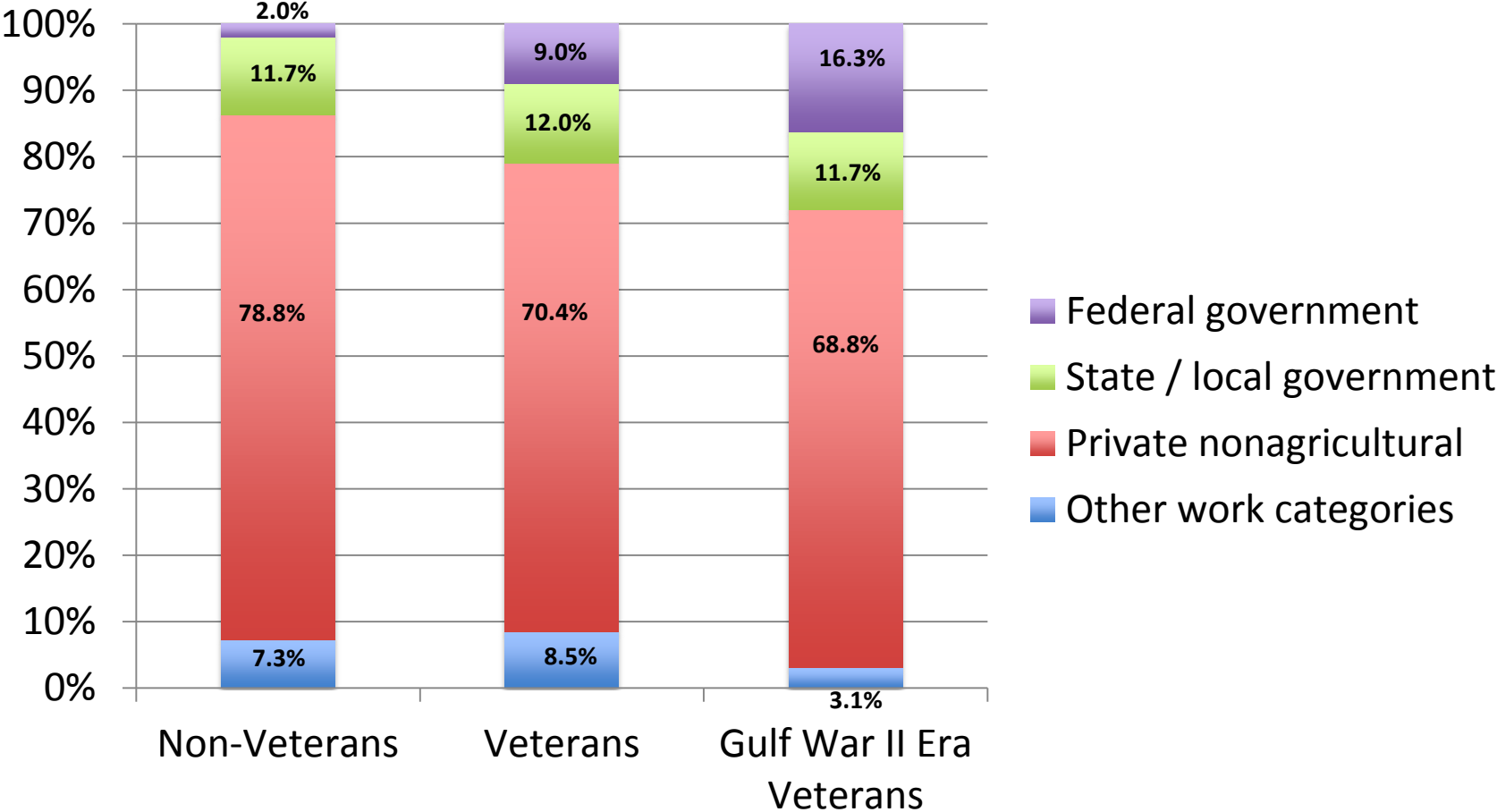
Unemployed Veterans in 2013 by period of service

Gulf War era II — September 2001-present
Gulf War era I — August 1990-August 2001



Veterans and especially Gulf War II Era Veterans were more likely to work for the Federal government than non-Veterans

Employed Veterans in 2013



Source: Bureau of Labor Statistics www.bls.gov/cps

Totals may not add to 100% because of rounding

For more information

- Employment Situation of Veterans is available at:
<http://www.bls.gov/news.release/pdf/vet.pdf>
- “Veteran Labor Force in the Recovery” is available at:
<http://www.dol.gov/sec/media/reports/VeteransLaborForce/VeteransLaborForce.pdf>
- “Women Veterans in the Labor Force” is available at:
<http://www.bls.gov/spotlight/2014/women-vets/>
- Women Veterans’ employment is available at:
<http://www.dol.gov/vets/womenveterans/women-vets.htm>
- “Employment and earnings of recent Veterans: data from the CPS” is available at:
<http://www.bls.gov/opub/mlr/2010/07/art1full.pdf>
- How the Government Measures Unemployment is available at:
http://www.bls.gov/cps/cps_htgm.htm
- CPS technical documentation is available at:
<http://www.bls.gov/cps/documentation.htm#concepts>